

# WATERLEIGH

— CURRITUCK RESERVE —



**RELIANT**  
CONSTRUCTION

## THE BUILDER'S STORY

**Reliant Construction** is a family owned and operated company that builds quality single family homes in the communities of coastal Virginia and North Carolina. Our president, Terry Neal, has been building in the area since 1981 and has a solid reputation for building quality homes that create happy, satisfied homeowners. His homes are well known for their large rooms, ample closet space and quality construction.

Joining Terry at Reliant are his son, Greg and two daughters, Angie and Kim. Greg has been supervising the actual construction of homes since 2000. He is always eager to meet with homebuyers and truly likes forming a one-on-one relationship with them. Angie and Kim work behind the scenes in office management, but are always available to answer any questions.

The new generation at Reliant promises to carry on the same philosophy and tradition that Terry established decades earlier — building quality homes and making happy, satisfied homeowners. We believe the success of any new project depends on the talent and dedication of the team that brings it to life. And the homebuyer is an integral part of that team. With your vision and our expertise on the team, your home buying experience is sure to be both enjoyable and memorable. That's what we call a Reliant-built home.

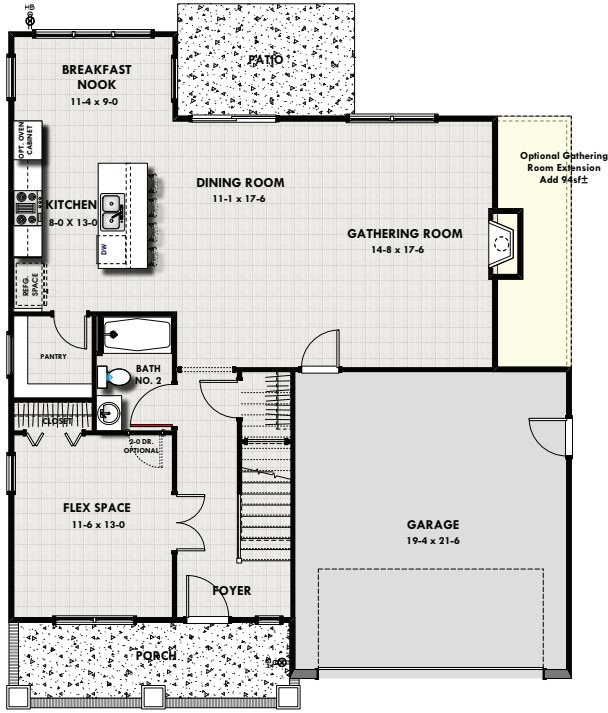


WATERLEIGH

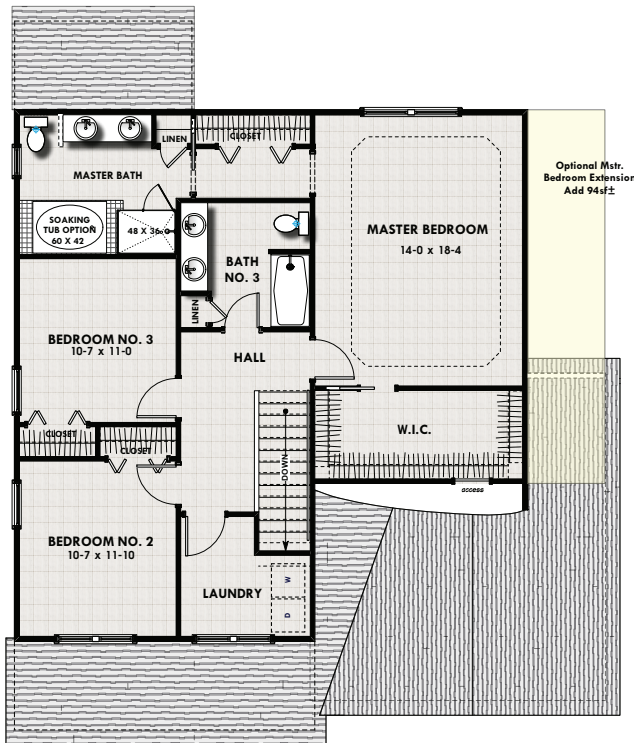
— CURRITUCK RESERVE —

# THE RYAN

STANDARD FLOORPLAN SHOWN



FIRST FLOOR



SECOND FLOOR



STANDARD ELEVATION



CRAFTSMAN ELEVATION

- **3 bedrooms**
- **3 baths**
- **Flex room**
- **2162 sf**

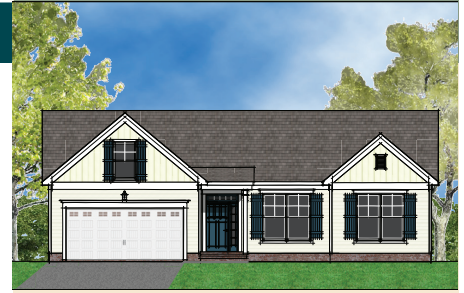
**WATERLEIGH**

— CURRITUCK RESERVE —

Builder Reserves the right to substitute plans, prices, components and specifications and withdraw or modify any plans without notice. Individual homes may vary from the models or each other depending on field conditions. Artist renderings, representative photography, and floorplans are subject to change without notice.

# THE CALEB

STANDARD FLOORPLAN SHOWN

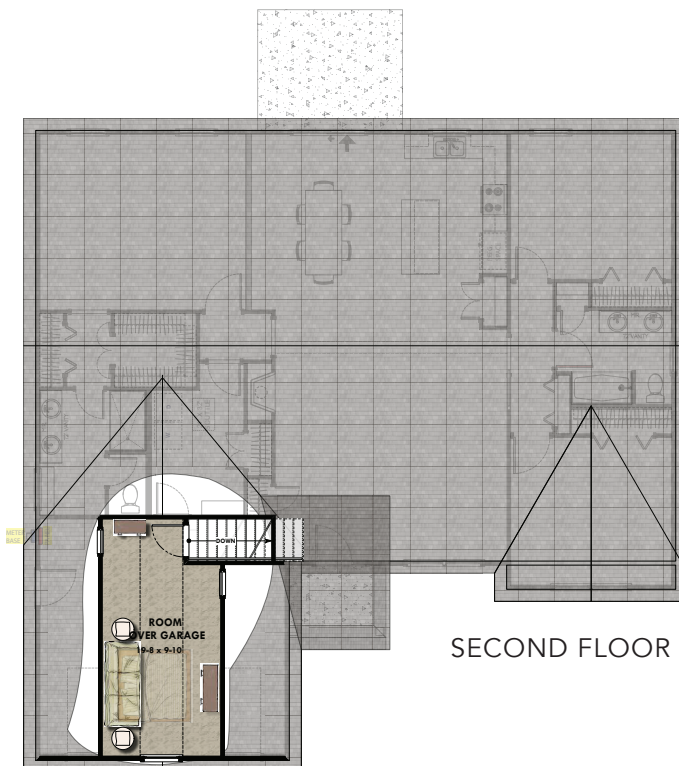


STANDARD ELEVATION



OPTIONAL ELEVATION

- 4 bedrooms
- 2 baths
- 2090 sf



SECOND FLOOR

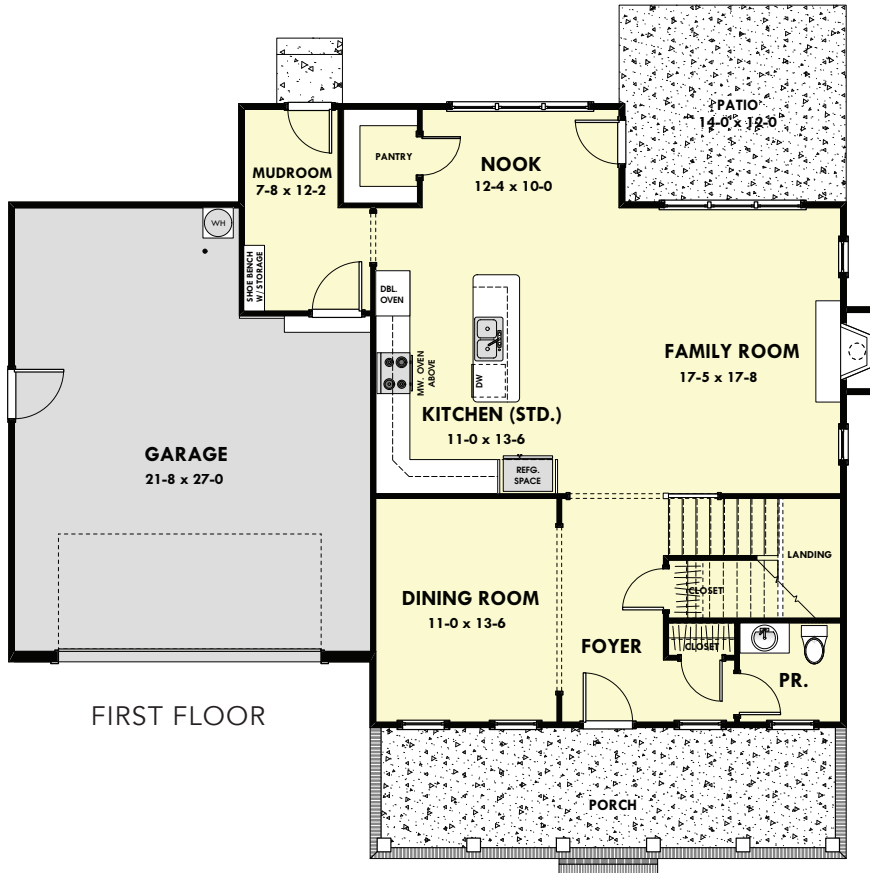
## WATERLEIGH

— CURRITUCK RESERVE —

Builder Reserves the right to substitute plans, prices, components and specifications and withdraw or modify any plans without notice. Individual homes may vary from the models or each other depending on field conditions. Artist renderings, representative photography, and floorplans are subject to change without notice.

# THE ETHANS MILL

STANDARD FLOORPLAN SHOWN



STANDARD ELEVATION



OPTIONAL SIDE-LOAD ELEVATION  
W/BOARD & BATTEN

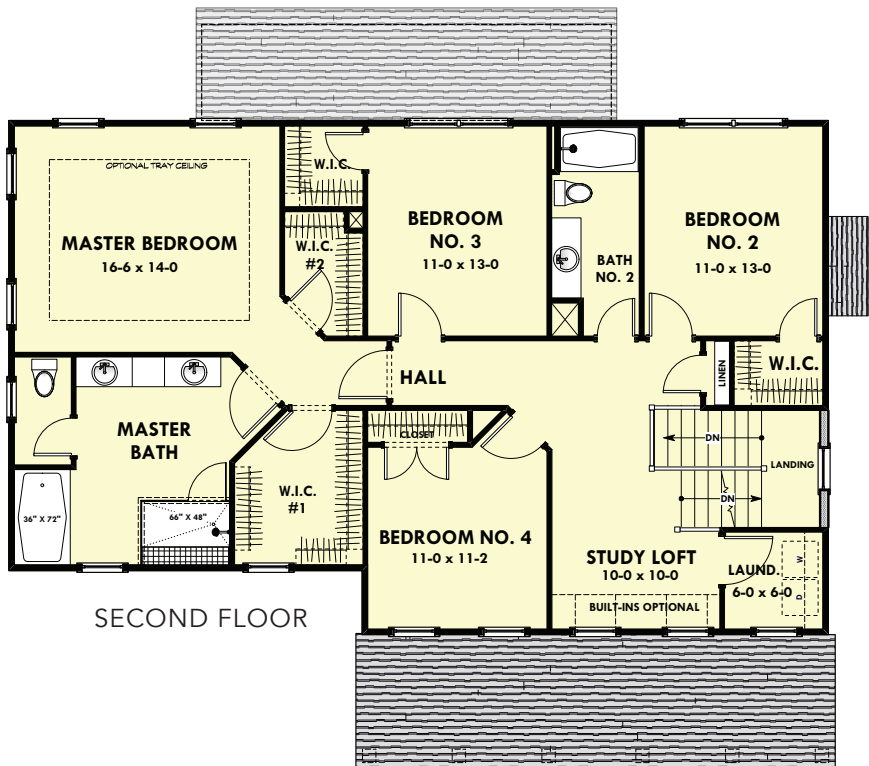
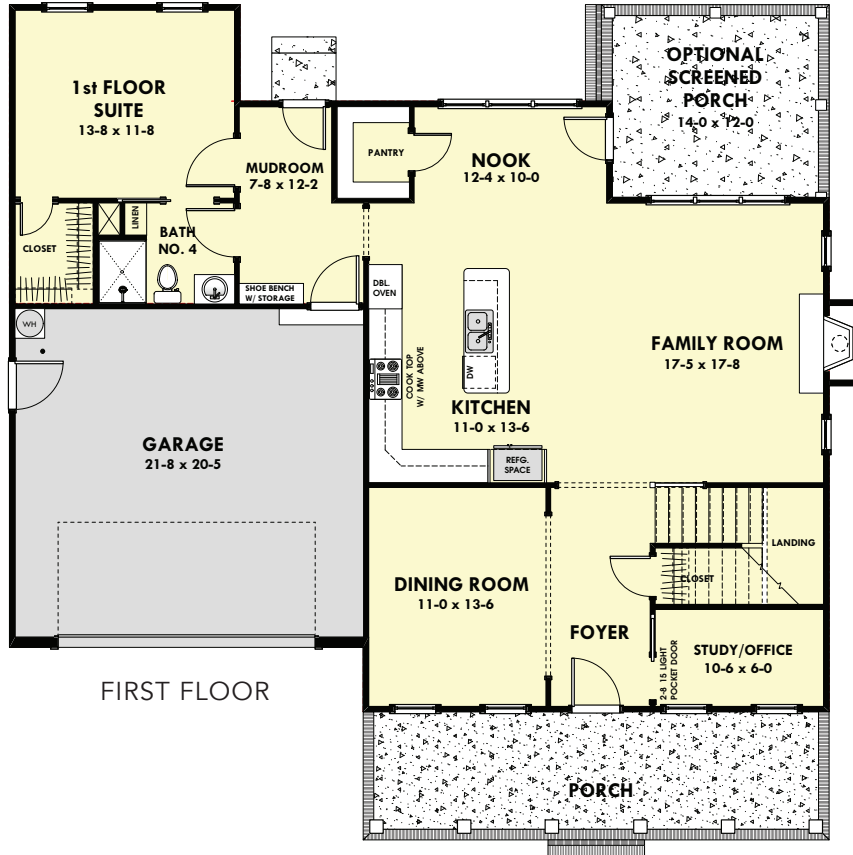
- 4 bedrooms
- 2.5 baths
- 2667 sf

**WATERLEIGH**  
— CURRITUCK RESERVE —

Builder Reserves the right to substitute plans, prices, components and specifications and withdraw or modify any plans without notice. Individual homes may vary from the models or each other depending on field conditions. Artist renderings, representative photography, and floorplans are subject to change without notice.

# THE ETHANS MILL II

STANDARD FLOORPLAN SHOWN



STANDARD ELEVATION



OPTIONAL SIDE-LOAD ELEVATION  
W/BOARD & BATTEN

- 5 bedrooms
- 3 baths
- 2927 sf

**WATERLEIGH**  
— CURRITUCK RESERVE —

Builder Reserves the right to substitute plans, prices, components and specifications and withdraw or modify any plans without notice. Individual homes may vary from the models or each other depending on field conditions. Artist renderings, representative photography, and floorplans are subject to change without notice.

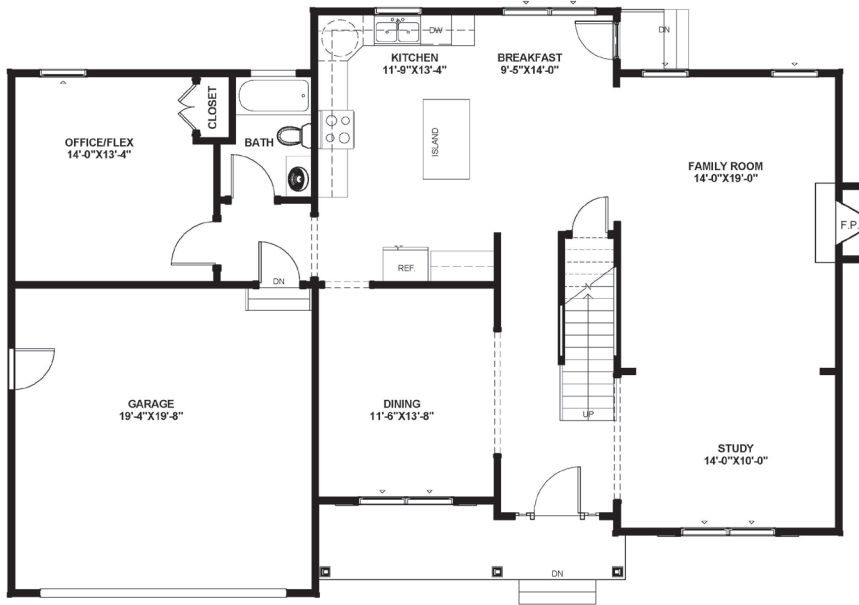
# THE CATHERINE I

STANDARD FLOORPLAN SHOWN

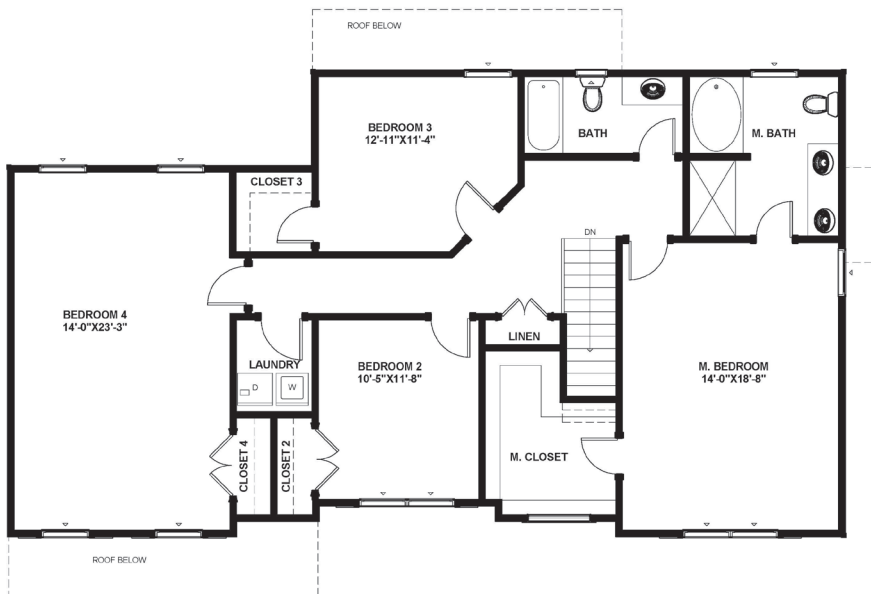


STANDARD ELEVATION

- *4 bedrooms*
- *3 baths*
- *2782 sf*



FIRST FLOOR



SECOND FLOOR

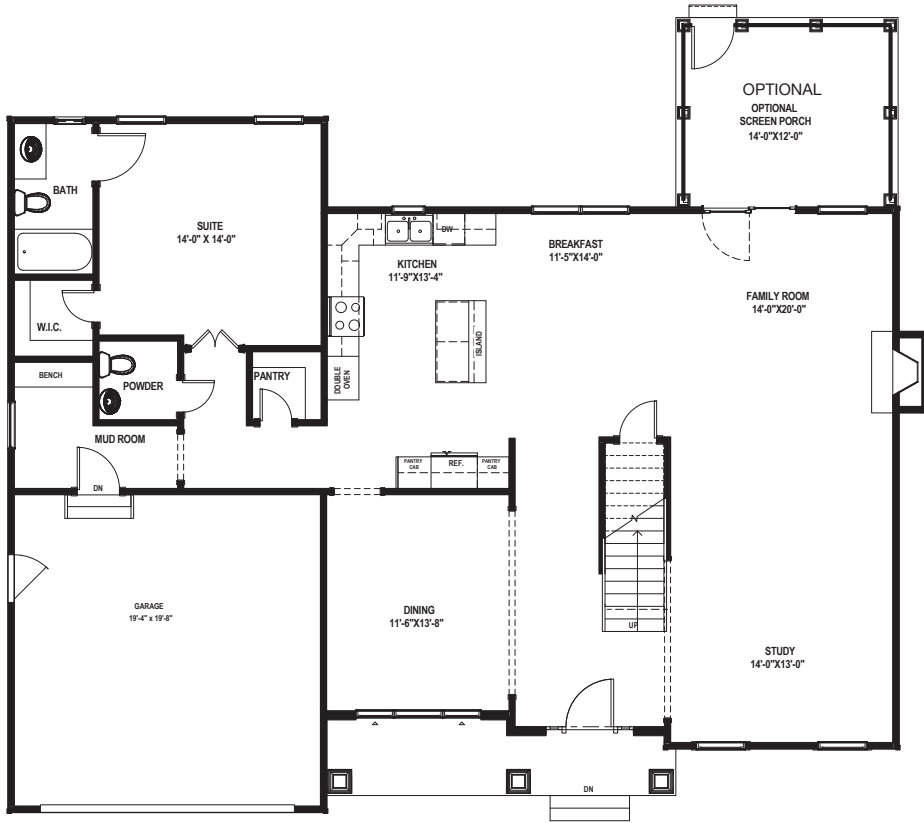
## WATERLEIGH

— CURRITUCK RESERVE —

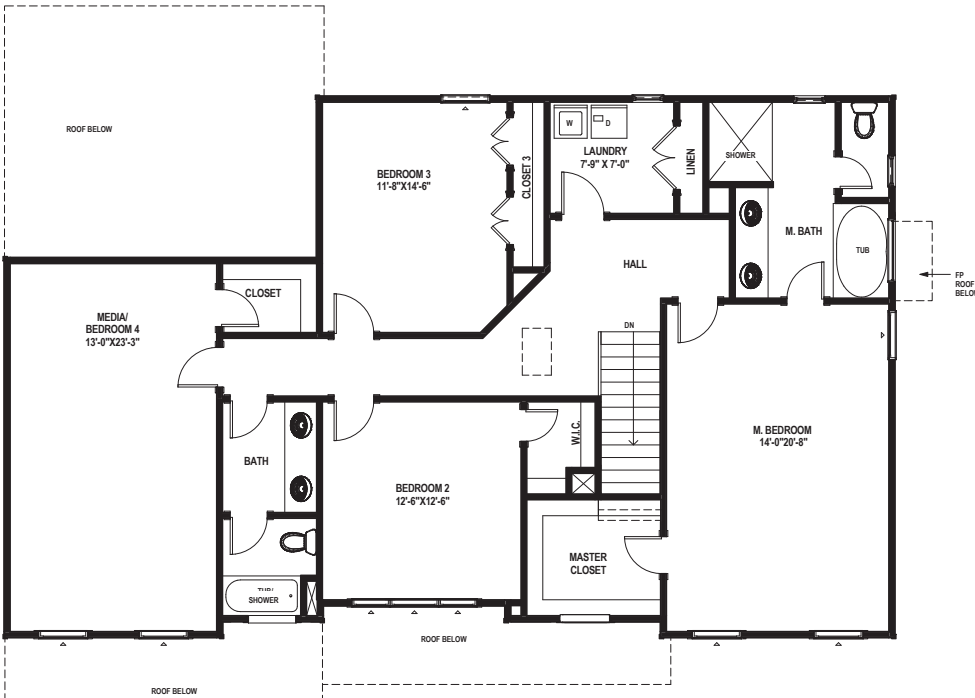
Builder Reserves the right to substitute plans, prices, components and specifications and withdraw or modify any plans without notice. Individual homes may vary from the models or each other depending on field conditions. Artist renderings, representative photography, and floorplans are subject to change without notice.

# THE KELLY

STANDARD FLOORPLAN SHOWN



FIRST FLOOR



SECOND FLOOR



STANDARD ELEVATION



OPTIONAL SIDE-LOAD ELEVATION  
WITH CRAFTSMAN COLUMNS

- *5 bedrooms*
- *3.5 baths*
- *3310 sf*

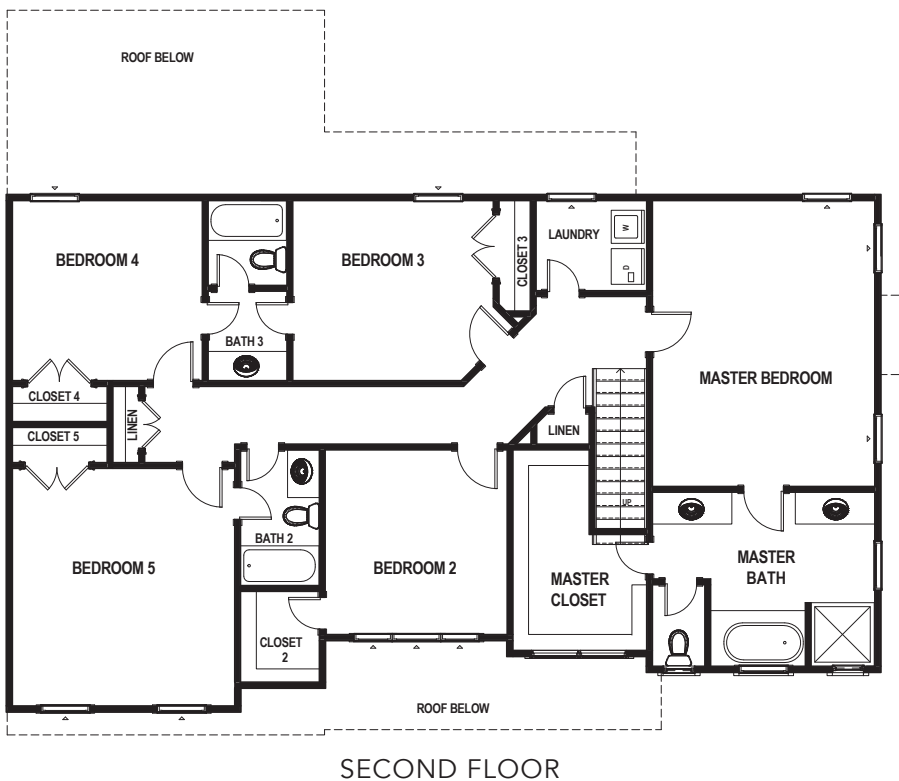
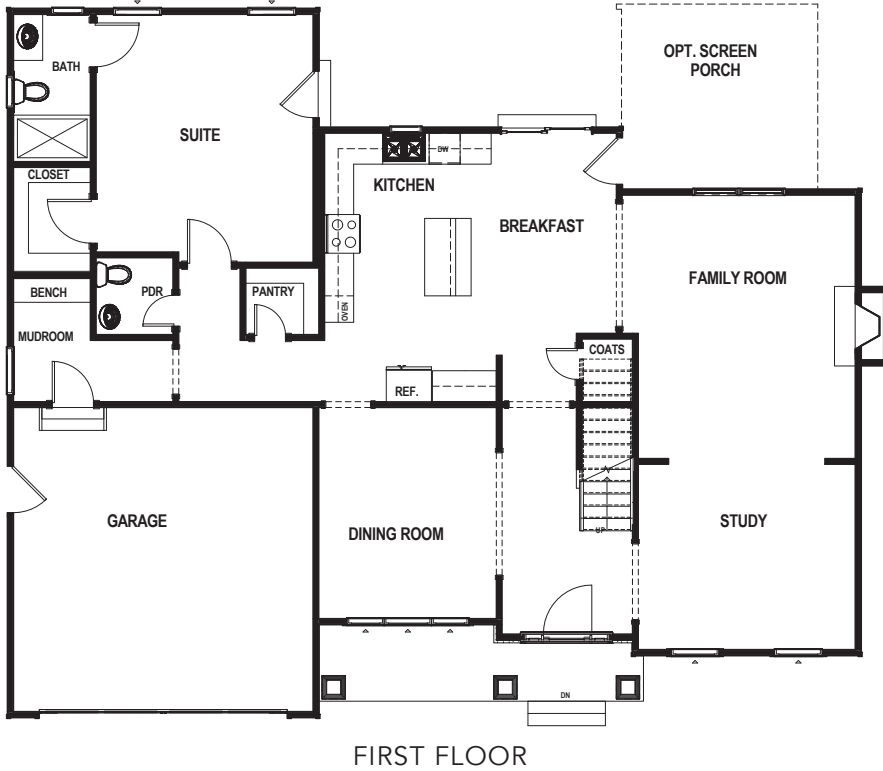
**WATERLEIGH**  
— CURRITUCK RESERVE —

Builder Reserves the right to substitute plans, prices, components and specifications and withdraw or modify any plans without notice. Individual homes may vary from the models or each other depending on field conditions. Artist renderings, representative photography, and floorplans are subject to change without notice.

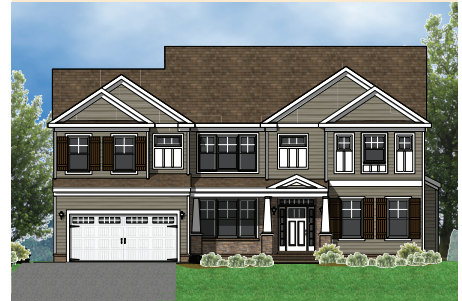


# THE CATHERINE II

STANDARD FLOORPLAN SHOWN



STANDARD ELEVATION



OPTIONAL FRONT-LOAD ELEVATION WITH CRAFTSMAN COLUMNS



OPTIONAL SIDE-LOAD ELEVATION WITH CRAFTSMAN COLUMNS

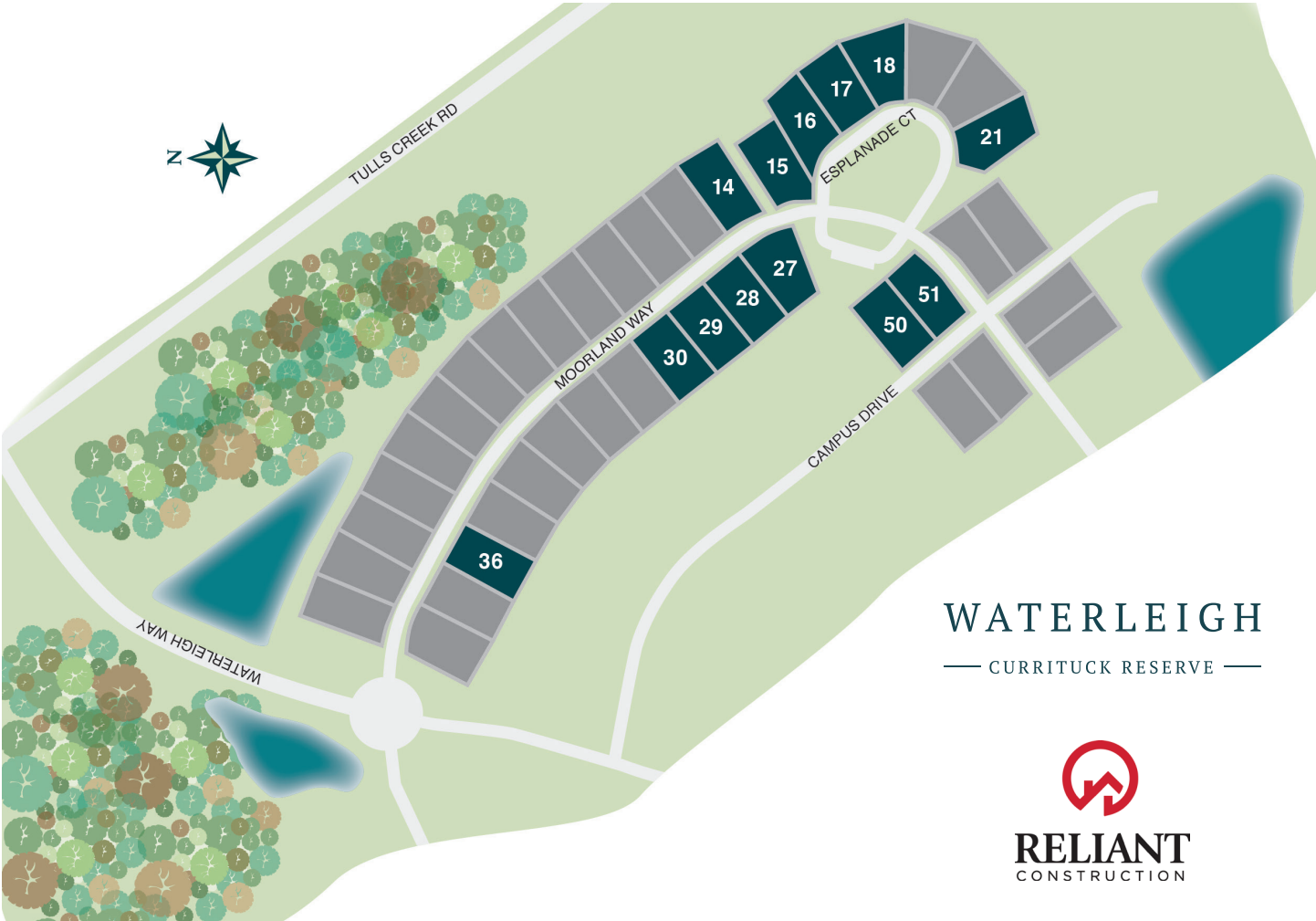
- *6 bedrooms*
- *4.5 baths*
- *3238 sf*

WATERLEIGH

— CURRITUCK RESERVE —

Builder Reserves the right to substitute plans, prices, components and specifications and withdraw or modify any plans without notice. Individual homes may vary from the models or each other depending on field conditions. Artist renderings, representative photography, and floorplans are subject to change without notice.

# NOTES & PLAT



## A Soothing Lifestyle Close to it All

While Waterleight is removed from the hustle and bustle of modern life and may appear to be rural, the city is only minutes away, so relaxed living can happen for families of any age.



# WATERLEIGH

— CURRITUCK RESERVE —

[waterleighthnc.com](http://waterleighthnc.com)



# STANDARD FEATURES

## Exterior

- Raised Solid Foundation with Brick Skirt on front of house
- Premium Vinyl Siding
- Vinyl Shakes Accents (Certain Models)
- Maintenance Free Vinyl Shutters (Certain Models)
- Low Maintenance Exterior with wrapped trim, vinyl soffits and porch ceiling
- Seamless Gutter and Downspouts
- 30 Year Architectural Roof Shingles- Algae Resistant
- Insulated Fiberglass Front Entry Door
- Security Deadbolt Locks Front, Rear and Garage Service Doors
- Insulated Metal Raised Panel Garage Doors with Windows
- ★ **Garage Personal Door with concrete sidewalk to driveway (except side loading Garage)**
- Professionally Landscaped with Sod in front yard
- Water Hose Connections, Front & Rear
- Weather proof receptacles Front & Rear
- Concrete Walk and Driveway-Broom Finish
- ★ **10 x 20 Concrete Patio (200 sq. ft.) Broom finish**
- 20,000 sq. ft. minimum Home Sites

## Kitchen

- Birch Wood Cabinets
- 42" Upper Cabinets in Kitchen
- Granite Kitchen countertops with double under mount stainless steel sink
- Center island with pendant lights in most models
- ★ **Frigidaire Stainless Steel Gourmet Appliance Package with Gas Cooktop, Microwave, Dishwasher and Double Convection Oven in most models**
- Eat in Kitchen – Most models
- Ice Maker Hook Up
- Delta Single lever faucet-Chrome
- Six recessed lights

## Baths

- ★ **Master Bath:**
- ★ **Tub with Tile Surround (most models)**
- ★ **Separate Shower with Tile surround and Glass door**
- ★ **Granite (Level 1) Countertop with two under mount white porcelain bowls**
- ★ **Tile Floors**
- All Baths:
  - Exhaust Fans
  - Water Saver Shower Heads & Toilets
- ★ **Adult Height Vanities**
- Delta Faucets- Chrome Finish
- Elongated Toilets
- Powder Room- Pedestal sink with oval mirror- Certain Models
- Cultured Marble Vanity Tops- Except Master Bath
- No wax vinyl flooring- Except Master Bath and Certain First Floor Rooms

## Interiors

- Nine Foot (9') Ceilings First Floor
- ★ **LVT Flooring in all First Floor Rooms Except Bed Rooms and Bedroom Closets**
- No wax Vinyl Flooring in Second Floor Baths (except Master), Laundry, and Utility Room
- Wall to Wall Carpeting –unless otherwise noted
- ★ **Six (6) pound upgrade Carpet Padding**
- ★ **Gas Fireplace with painted Custom Fireplace Mantle with Granite Hearth and Surround**
- ★ **Dining Room: Two Piece Crown Molding and Chair Rail; one piece crown molding in all other 1st floor rooms (except baths)**
- Texture Finished Sheetrock Walls and Ceilings
- ★ **Fully Finished Garage Walls and Ceiling-Textured and Painted**
- Raised panel Interior Doors

- Decorator Brushed Nickel lighting package
- Pull down attic stairway
- Custom Designed Closets with ventilated shelving
- Satin Nickel Door- Locks, Hinges and Stops

## Electrical Features

- ★ **Ceiling Fans in Family Room and Master Bedroom**
- Ceiling Fan Pre-Wire in all Bedrooms
- 200 Amp Electrical Service
- Hard wired smoke detectors
- ★ **Garage Door Opener with one remote**
- ★ **Structured Wiring**
- Central Main Panel Access Box
- Data Pre-Wire in 2 locations
- Cable Pre-Wire in Family Room and All Bedrooms
- Telephone Hookup in Kitchen, Family room and all bedrooms
- Pre-wire 1 Surround Sound system
- Pre-Wire Security System Downstairs Doors and Windows- Hardwired

## Energy Saving

- Efficient 2 Zone Gas Heating-Most Models
- 14 Seer Efficient 2 Zone Air Conditioning-Most Models
- Insulated Vinyl Windows with low E glass and screens
- R-38 Insulated Ceilings
- House Wrap-Air and Water Barrier
- Energy Efficient Gas Fireplace with logs
- 50 Gallon Quick Recovery Energy efficient Gas Hot Water Heater
- Sealed Duct Work
- Poly Seal Air filtration Package
- Programmable Thermostats
- Insulated Energy Efficient Entry Doors

## Additional Features

- 2-10 Year Builders Warranty through Quality Builders Warranty
- One Year Builder Warranty

★ Other builders options that are included in a Reliant home!

**Nancy Bass**  
**(757) 681-3573**  
nbass@howardhanna.com



Real Estate Services

**NEW HOMES DIVISION**  
4598 Broad Street  
Virginia Beach, VA 23462



**RELIANT**  
CONSTRUCTION

Builder Reserves the right to substitute plans, prices, components and specifications and withdraw or modify any plans without notice. Individual homes may vary from the models or each other depending on field conditions. Artist renderings, representative photography, and floorplans are subject to change without notice.

